

AXIGEN Mail Server

Quick Installation and Configuration Guide

Product version: 6.1

Document version: 1.0

Last Updated on: May 28, 2008

Chapter 1: Introduction	3
Welcome.....	3
Purpose of this document.....	3
Related documentation.....	3
About AXIGEN® Mail Server.....	4
Chapter 2: Installing AXIGEN.....	5
AXIGEN Availability.....	5
The Installation Kit.....	5
Installation Steps.....	5
Chapter 3: Configure and Work with AXIGEN.....	7
Running the AXIGEN Configuration Wizard.....	7
Logging in to WebAdmin.....	11
Creating a New Domain.....	12
Adding an Account.....	14
Connecting ClamAV and SpamAssassin.....	16
Accessing AXIGEN WebMail.....	16
Configuring Other Services.....	16
Advanced Configuration Options for the AXIGEN Mail Server.....	17
Working with AXIGEN's Personal Organizer.....	18
Configuring Mail Clients for Use with AXIGEN.....	19

Chapter 1: Introduction

Welcome

Dear user, you are testing or you have acquired AXIGEN Mail Server, the right choice for your e-mail messaging system running under the Linux operating system. As you will soon realize, the server is very easy to administrate and benefits from efficient technical support which makes AXIGEN the ideal choice as a messaging system in any environment.

Purpose of this document

The purpose of this document is to provide a quick guide for the installation and configuration processes of AXIGEN mail server. The document will take you through the installation process and then enable you to initiate the configuration process. The initial configuration process described in this document will include basic options such as creating accounts and domains with WebAdmin, one of the multiple configuration options available in AXIGEN Mail Server.

This guide provides a detailed procedure for connecting the ClamAV and SpamAssassin applications and also how to configure compatible mail clients to work with AXIGEN.

For an in-depth overview of the configuration process and other configuration options, please consult AXIGEN [online documentation](#).

Related documentation

Additional information regarding AXIGEN can be found in the following documents:

- AXIGEN Online Documentation:
<http://www.axigen.com/docs/en/>
- AXIGEN System Administrator's Manual, available at the following address:
http://www.axigen.com/usr/files/AXIGEN_System_Administrator's_Manual_6.1_v1.0.pdf
- AXIGEN Knowledgebase, available on <http://www.axigen.com/knowledgebase/index.php>
- AXIGEN Forum, available on <http://www.axigen.com/forum/>

About AXIGEN® Mail Server

What is AXIGEN Mail Server?

Keeping an eye on the current market and end user requirements GECAD Technologies brought its new product 'AXIGEN Mail Server', with advanced technologies and messaging services. AXIGEN Mail Server is an Internet-based mail server that provides messaging services over the Internet via connections using a Transmission Control Protocol/Internet Protocol (TCP/IP) network.

AXIGEN Mail Server sends mail messages using the Simple Mail Transfer Protocol (SMTP) Messages can be retrieved using the Post Office Protocol version 3 (POP3), the Internet Message Access Protocol (IMAP) and HTTP protocol (HTTP). For remote users AXIGEN offers as a WebMail module.

The administration is easily done through a web interface (WebAdmin), Command Line Interface (CLI) or configuration file.

AXIGEN MAIL SERVER is specifically designed for use in small businesses, corporate environments or at ISPs.

Modular architecture

AXIGEN® Mail Server works on a modular architecture including current advanced Internet messaging protocols/services. The figure below explains all modules of AXIGEN mail server:

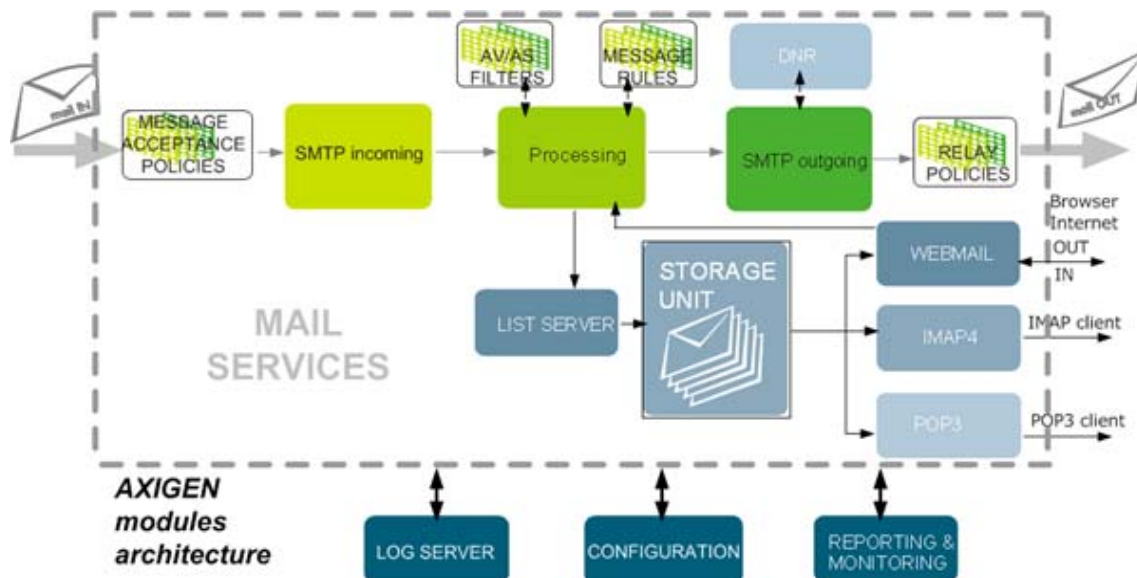


Figure 1: AXIGEN modular structure

The above figure presents the mail messages flow inside the AXIGEN mail server. The message goes through various modules in the server and gets delivered securely to its destination.

AXIGEN components

All AXIGEN Mail Server modules: SMTP Incoming, Processing, SMTP Outgoing, Storage Unit, POP3, IMAP4, POP3 Proxy, IMAP Proxy, WebMail, List Server, Log server, Reporting and FTP Backup that define the AXIGEN Architecture are described in [the dedicated chapter of our Online Documentation](#).

Configuration

AXIGEN is delivered with fully functional configuration settings. You can change the mail server's configuration to suit your needs and network specifics using the general server configuration file (called axigen.cfg), the WebAdmin interface or the command line interface (CLI). This Quick Installation and Configuration document presents the installation procedure and the initial configuration steps to be taken using WebAdmin, the recommended configuration option. For details on the other configuration options available with AXIGEN, please consult the product's [System Administrator's Manual](#).

Chapter 2: Installing AXIGEN

This chapter includes the step-by-step description of the AXIGEN mail server installation and configuration for Linux distributions. However, AXIGEN Mail Server is also available on FreeBSD, OpenBSD, NetBSD and on Solaris 10. For BSD and Solaris installation instructions, please see the [Online documentation](#).

Before installing AXIGEN, it is highly recommended to check the product software/hardware requirements and the list of supported platforms, all available [here](#).

AXIGEN Availability

Currently AXIGEN is available as AXIGEN Evaluation version, and as commercial editions: AXIGEN Office Edition Free, AXIGEN Business Edition, AXIGEN Service Provider Edition and AXIGEN Enterprise Edition.

The AXIGEN kit is available for download ONLY as evaluation version. You can switch at any moment to a commercial edition by following a simple one-time purchase / registration process.

Should you be happy with evaluating AXIGEN, there is a very simple process to use one of the available AXIGEN Editions, while keeping the current configuration. All you have to do is to install the License key received after the purchasing/registration process.

After purchase, you will receive the Registration Code, you should use it to register on <http://www.axigen.com> and receive your own License Key.

To see a detailed description of our products, please visit the [corresponding section](#) of our site.

The Installation Kit

The installation kit contains the evaluation version of AXIGEN Mail Server and is available for download or on CD.

The AXIGEN installation kit available on CD includes two main directories:

- **doc**
- **install.**

The **doc** directory contains all the product-related documentation files; the **install** directory contains the installation related files for supported distributions on i386, PowerPC and SPARC platforms. It also contains AXIGEN Outlook Connector installation kits.

The AXIGEN installation kit available on <http://www.axigen.com/mail-server/download/> contains the installation related files for supported Linux distributions on i386 platforms and BSD supported versions.

Installation Steps

Here are the common steps required when installing the AXIGEN mail server on Linux platforms:

- **Download the required package** (select the specific package according to your Linux distribution) or **browse the AXIGEN Installation CD**. This installation kit contains the evaluation version of AXIGEN Mail Server.
- **Unpack the original installation kit.** Use the installation kit provided by our partner or the kit downloaded directly from our website. Unpack it using the standard **tar** command:

```
tar xzvf <install-kit-file>
```

For example, to unpack the AXIGEN RPM package for the i386 architecture, type in the same directory as the file:

```
tar xzvf axigen-6.1.0.i386.rpm.gcc3.tar.gz
```

Quick Installation and Configuration Guide

- **Login as root.**
- **Install AXIGEN** using the standard package management application, specific to your distribution. For example, in order to install the RPM package, you should use the rpm command, from the same directory as the AXIGEN RPM file:

```
rpm -ivh axigen-version.<arch>.rpm
```

For example, to install the rpm version 6.0.0 for i386 architecture, the exact command is:

```
rpm -ivh axigen-6.1.0-1.i386.rpm
```

Note: Find more information on AXIGEN® installation in the INSTALL file of you Installation Kit.

- **Configure AXIGEN:** Before starting AXIGEN Mail Server, you should adjust some settings, according to your specific environment (for instance setting the admin password or enabling the default WebAdmin listener). You can do that by running the AXIGEN Configuration Wizard. For more details, please refer to [Chapter 3](#) in this document.
- **Stop any other mail services (Sendmail, Postfix, IMAPD, Dovecot) or web services (Apache) currently running in your system.** If you fail to do that, the corresponding AXIGEN Services will be disabled when first starting AXIGEN.
- **Start the AXIGEN server:** To start the server, issue commands specific to your Linux distribution. For instance, under RedHat and SUSE distributions, the AXIGEN server can be started by issuing

```
/etc/init.d/axigen start
```

- **Create domains/accounts for your AXIGEN® installation.**

For more information about how to create domains/accounts in AXIGEN, please refer to the [Creating a New Domain](#) section of this document.

Chapter 3: Configure and Work with AXIGEN

This chapter provides complete description on how to work with AXIGEN Mail Server.

Running the AXIGEN Configuration Wizard

Aiming to enhance, simplify and render the initial setup automatic, the AXIGEN Mail server includes the **AXIGEN Configuration Wizard**. In eleven easy steps, the wizard enables system administrators to instantly set the admin password, configure the primary domain and set up an interface for the WebAdmin management tool and also for the POP3 and IMAP services. These actions were previously performed partly manually, partly using the WebAdmin interface.

The AXIGEN Configuration Wizard is provided as part of all the AXIGEN Mail Server 6.0 installation packages, available for download on the AXIGEN site.

Firstly, the wizard needs to be launched by issuing one of the following commands, depending on the platform you have installed the AXIGEN Mail Server on:

1. On Solaris and all Linux platforms:

```
/opt/axigen/bin/axigen-cfg-wizard
```

2. On OpenBSD and FreeBSD:

```
/usr/local/bin/axigen-cfg-wizard
```

3. On NetBSD:

```
/usr/pkg/bin/axigen-cfg-wizard
```

1. Configuring the Admin Password

After launching the AXIGEN Configuration Wizard, the first step you are prompted to take is specify the admin password. The password is required and therefore system administrators must type at least one character.

Use the Password field to type your password and the Validate field to retype it for validation.

To move from one field to another, please use the Tab or Enter keys. To proceed to the next step, when located on the Next button, press the Enter key.

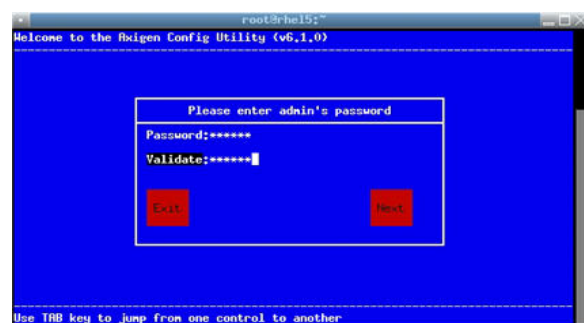


Figure 2: Setting the Admin Password

2. Configuring your Primary Domain

The next stage of running the wizard consists in configuring AXIGEN's primary domain. The wizard will automatically detect the machine's FQDN (Fully Qualified Domain Name) and based on it will propose the domain name as primary. If no domain can be detected, the default 'localdomain' will be displayed. System administrators can edit the fields of this tab at any time.

In the Primary Domain field, the wizard will display the automatically detected domain. Use the Domain Location field to edit the default storage path for the primary domain, `/var/opt/axigen/domains`. To configure the primary domain password for the account postmaster, use the Postmaster account password field.

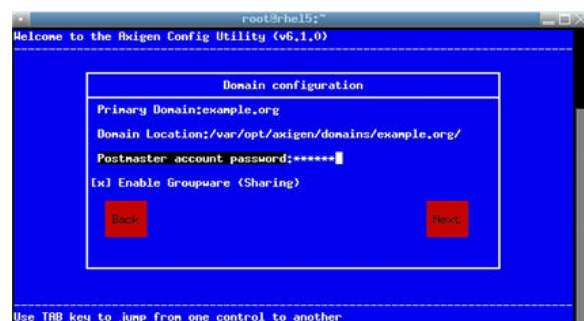


Figure 3: Primary Domain configuration

Quick Installation and Configuration Guide

To move from one field to another, please use the Tab or Enter keys. To proceed to the next step, when located on the Next button, press the Enter key.

3. Alias Configuration

When running the wizard, this step allows system administrators to select the alias they would like to configure for the primary domain defined at the previous step. There are three available options:

- Redirect all mails for root account to postmaster
- Add the 'localhost' alias to this domain
- Add the 'localhost.localdomain' alias to this domain

To select or deselect one of the listed options, press **Enter**.



Figure 4: Alias Settings

4. Configuring the WebAdmin Interface

This following step performed by the AXIGEN Configuration Wizard is to select the WebAdmin Interface. The wizard will list all the existing interfaces with their respective IP addresses and ports, enabling system administrators to select a listener for WebAdmin. In the previous versions, the WebAdmin was initially accessed on its default listener, <http://127.0.0.1:9000/>.

Select one of the listed interfaces, then move to the OK button (using the Tab or Enter keys) and then press Enter again.

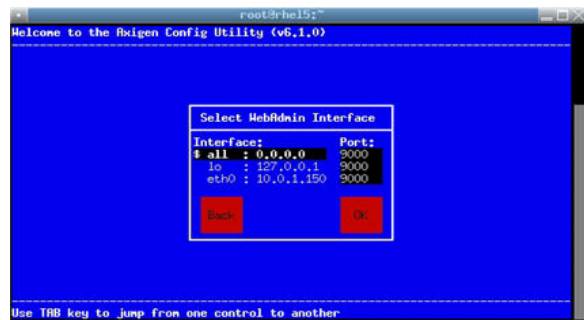


Figure 5: Adding a new domain using WebAdmin

If you choose the first option, all, all the listed interfaces will be used as listeners for the WebAdmin management tool. If you choose a different interface, you will be prompted to confirm the choice you have made.

5. Configuring the SMTP Interface

The next step performed by the AXIGEN Configuration Wizard is to select the SMTP Interface. The wizard will list all the existing interfaces with their respective IP addresses and ports, enabling system administrators to select a listener for SMTP.

Select one of the listed interfaces, then move to the OK button (using the Tab or Enter keys) and then press Enter again. If you choose the first option, all, all the listed interfaces will be used as listeners for the SMTP service. If you choose a different interface, you will be prompted to confirm the choice you have made.

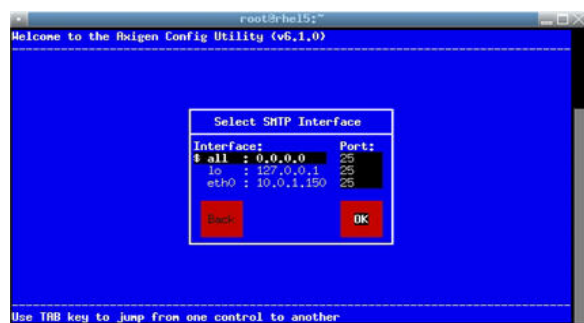


Figure 6: SMTP Interface Selection

Quick Installation and Configuration Guide

6. Services Selection

The sixth step of the automatic configuration process allows system administrators to select the active services for the AXIGEN server. For each of the selected services, POP3, IMAP or WebMail, further settings are available within the following steps. If none of the three services is enabled, the wizard will skip directly to step 10 of the configuration. To select or deselect one of the listed options, press Enter.

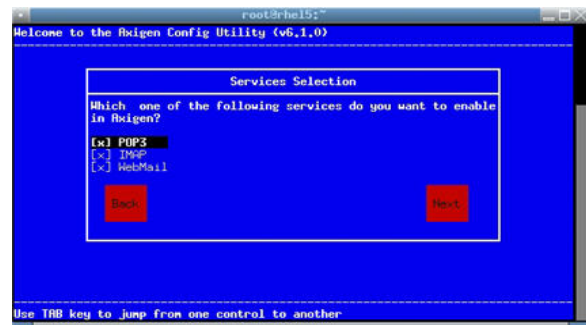


Figure 7: Selecting Services

7. Configuring the POP 3 Interface

The next step performed by the AXIGEN Configuration Wizard is to select the POP3 Interface. The wizard will list all the existing interfaces with their respective IP addresses and ports, enabling system administrators to select a listener for the POP3 service.

Select one of the listed interfaces, then move to the OK button (using the Tab or Enter keys) and then press Enter again. If you choose the first option, all, all the listed interfaces will be used as listeners for the POP3 service. If you choose a different interface, you will be prompted to confirm the choice you have made.

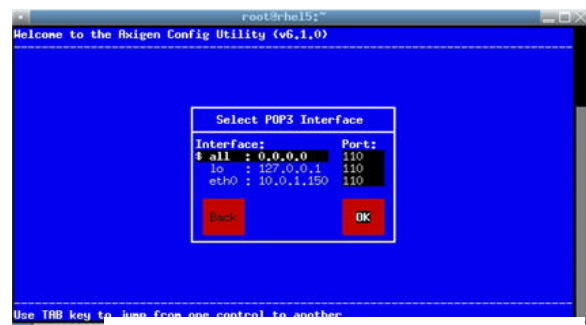


Figure 8: POP3 Interface Selection

8. Configuring the IMAP Interface

Step 8 performed by the AXIGEN Configuration Wizard is to select the IMAP Interface. The wizard will list all the existing interfaces with their respective IP addresses and ports, enabling system administrators to select a listener for the POP3 service.

Select one of the listed interfaces, then move to the OK button (using the Tab or Enter keys) and then press Enter again. If you choose the first option, all, all the listed interfaces will be used as listeners for the POP3 service. If you choose a different interface, you will be prompted to confirm the choice you have made.

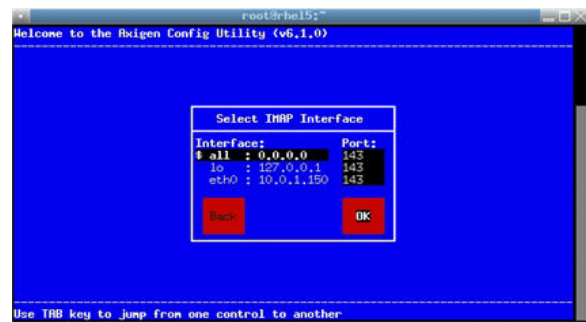


Figure 9: IMAP Interface Selection

9. Configuring the WebMail Interface

For the next step, the AXIGEN Configuration Wizard will allow system administrators to select the WebMail Interface. The wizard will list all the existing interfaces with their respective IP addresses and ports, enabling system administrators to select a listener for the WebMail service.

Select one of the listed interfaces, then move to the OK button (using the Tab or Enter keys) and then press Enter again. If you choose the first



Figure 10: WebMail Interface Selection

Quick Installation and Configuration Guide

option, all, all the listed interfaces will be used as listeners for the WebMail service. If you choose a different interface, you will be prompted to confirm the choice you have made.

10. Configuring Relay Policies

The AXIGEN Configuration Wizard will then prompt system administrators to select the networks allowed to relay emails through the AXIGEN server without prior authentication. To select or deselect one of the listed options, press Enter.

When one of the available networks is selected, a script configuring a Relay Policy is automatically created. For details on Relay Policies, please see the [corresponding section](#) of the online documentation.

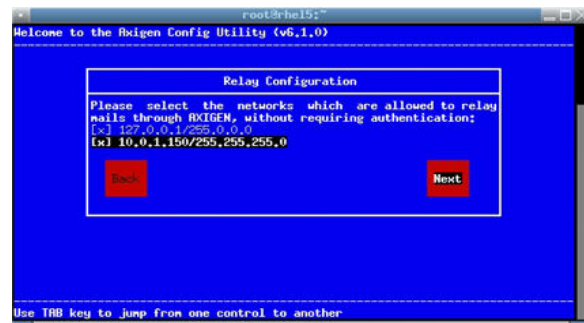


Figure 11: Relay Policies Configuration

11. Sendmail Wrapper Configuration

This configuration step is required if system administrators want command line applications such as mailx to be able to send emails via AXIGEN. Such applications use the Sendmail Wrapper which thus needs to be configured to work correctly with AXIGEN.

The Wizard describes in detail the actions taken when selecting "Yes" at this step.

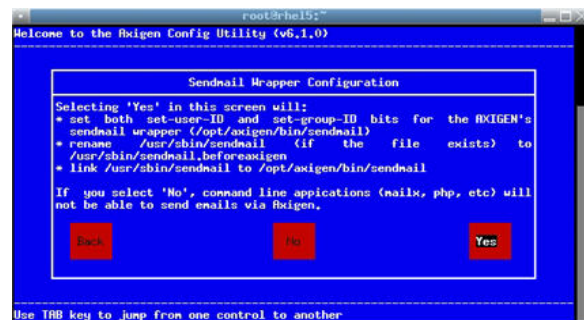


Figure 12: SendMail Wrapper Configuration

The Wizard will initially display a message prompting you to wait for the changes to be applied to your existing configuration and will then respond with a successful operation message. After completing these steps, the wizard will display a message summarizing the steps just taken. It will also instruct system administrators to start the AXIGEN service and then access the WebAdmin interface on the selected IP-port combination.



Figure 13: Success Message

Troubleshooting

Firstly, on some distributions, the operating system sets the console display encoding to UTF-8. Thus all the wizard's messages would be displayed incorrectly. For troubleshooting, please consult this [Knowledgebase article](#).

Secondly, if any other message except the successful one is displayed by the wizard after taking the configuration steps, please contact the AXIGEN Support team at support@axigen.com.

Logging in to WebAdmin

You can now login to WebAdmin. Start your Web browser and enter the IP/port pair you've configured. In the example set above, the default address is <http://127.0.0.1:9000>. Login using the **admin** username and the password you've previously set.



Figure 14: Login to WebAdmin

Creating a New Domain

The AXIGEN mail server stores each created domain in a unique domain location. This location is specified when creating the domain and will result in an error if a second domain is created on the same location. The default location displayed by AXIGEN is `/var/opt/axigen/domains`. To create a new Domain, please follow the steps presented below

1. Click on the **Manage Domains** tab. The following page is displayed.

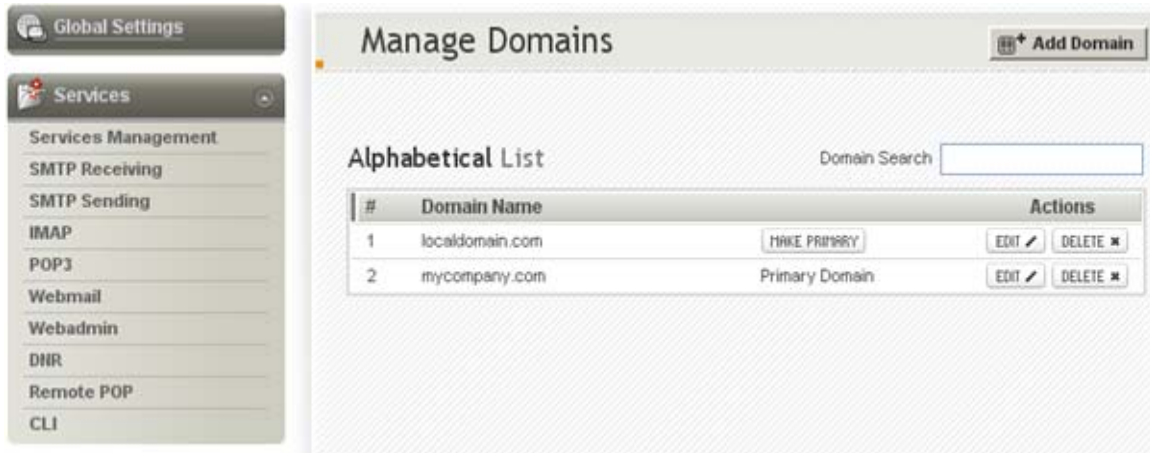


Figure 15: Displaying domains in WebAdmin

2. To add a new domain, hit the **Add Domain** button displayed in the upper right corner of the Domain list.
3. Type the name of your domain in the **Domain name** text box. Please note the name of the domain cannot include special characters.

Note: AXIGEN is RFC compliant in terms of characters you can use when creating new domains and/or accounts. Please refer to the relevant RFC standard, Internet message format, available for instance on <http://www.fags.org/rfcs/rfc2822.html>.

4. Specify a password to protect the selected domain in the **Postmaster password** field.
5. Check the **Enable MACL Support** option so users in belonging to this domain will be able to set different permission levels on their folders in order to share them.
6. Only on domain creation you have the option to configure storage location details by clicking the **Show** button. Detailed information on storage is available in the [corresponding Mail Server Architecture chapter](#).

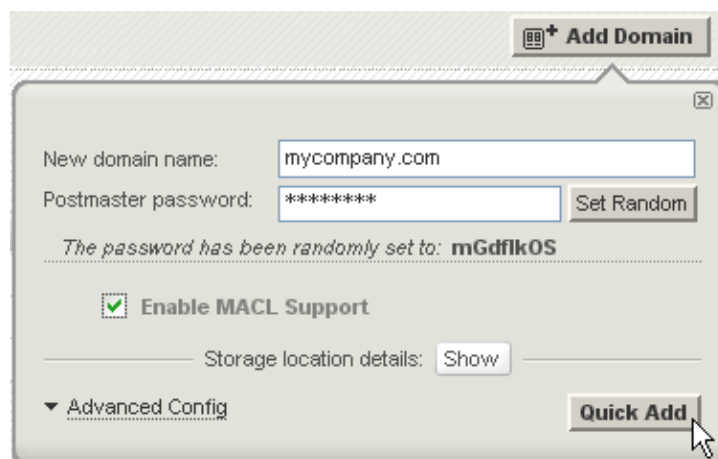
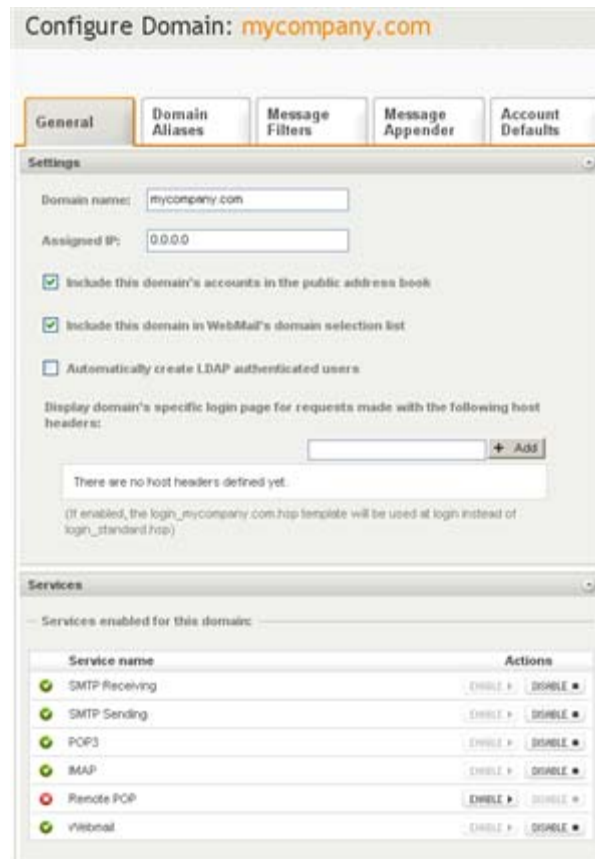


Figure 16: Adding a new domain using WebAdmin

Quick Installation and Configuration Guide

7. Hit the **Quick Add** button to have the domain created with all the default parameters.
8. Hit the **Advanced Config** link to edit the domain-specific parameters according to your preferences. An in-depth presentation of AXIGEN domain-specific parameters is beyond the purpose of this document. For more relevant information, please refer to the product's [System Administrator's Manual](#).



Configure Domain: **mycompany.com**

General | Domain Aliases | Message Filters | Message Appender | Account Defaults

Settings

Domain name:

Assigned IP:

Include this domain's accounts in the public address book

Include this domain in WebMail's domain selection list

Automatically create LDAP authenticated users

Display domain's specific login page for requests made with the following host headers:

+ Add

There are no host headers defined yet.

(If enabled, the login_mycompany.com.jsp template will be used at login instead of login_standard.jsp)

Services

Services enabled for this domain:

Service name	Actions
<input checked="" type="checkbox"/> SMTP Receiving	ENABLE ► DISABLE ►
<input checked="" type="checkbox"/> SMTP Sending	ENABLE ► DISABLE ►
<input checked="" type="checkbox"/> POP3	ENABLE ► DISABLE ►
<input checked="" type="checkbox"/> IMAP	ENABLE ► DISABLE ►
<input type="checkbox"/> Remote POP	ENABLE ► DISABLE ►
<input checked="" type="checkbox"/> Webmail	ENABLE ► DISABLE ►

Figure 17: Configuring domain specific parameters

9. Press the **Save Configuration** button (lower window section) to save your changes.

You have successfully created a new domain. You can see the domains you have created on the server at any time by clicking the **Manage Domains** tab.

Note: After defining your first domain, it will be set as primary domain. This will be considered your default domain for all incoming mail. You can make any domain primary at any time by pressing the corresponding **Make primary** button in the Domain list.

Adding an Account

To add a new account to an existing domain:

1. In the WebAdmin page click on **Manage Accounts** tab.
2. Click on the domain for which you want to display the existing accounts or to add a new account. In the example below, the accounts for the **mycompany.com** domain are displayed.

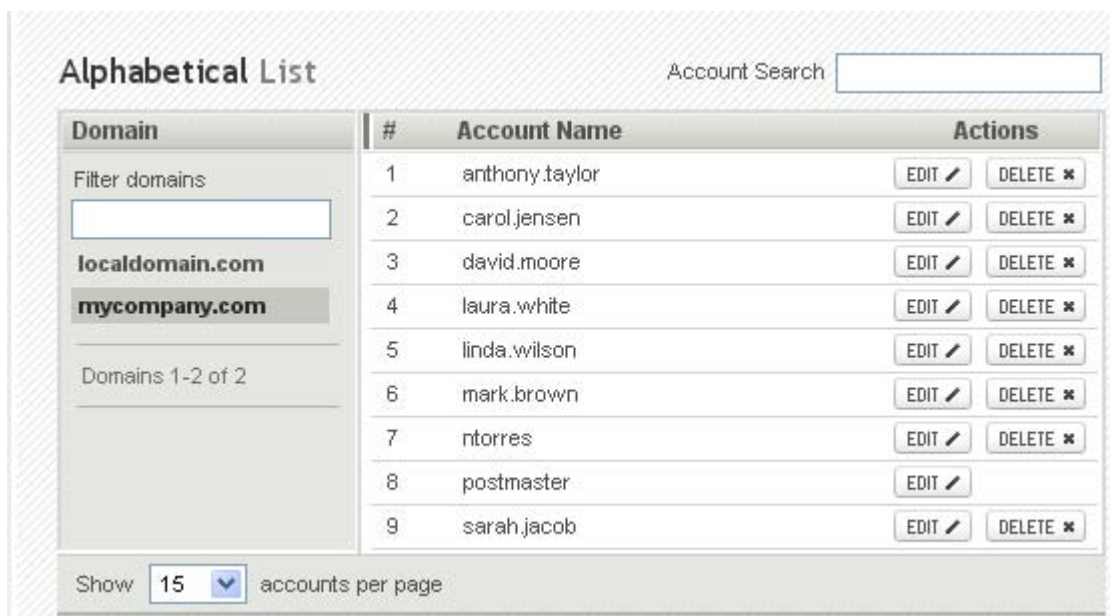


Figure 18: Displaying accounts for a specific domain.

3. The existing accounts for the domain you have selected are displayed. In order to create a new account, hit the **Add Account** button. The domain you are creating the account in is displayed in the **Domain name** field if you have already selected a certain domain. If you press the **Add Account** button prior to the domain selection, you will have to type the desired domain. Specify a name for the account you are creating in the **Account name** text field. Type a password of choice in the **Account password** text field or click the **Set Random** button to select a random password combination. When using this button, the password randomly assigned is displayed under it.

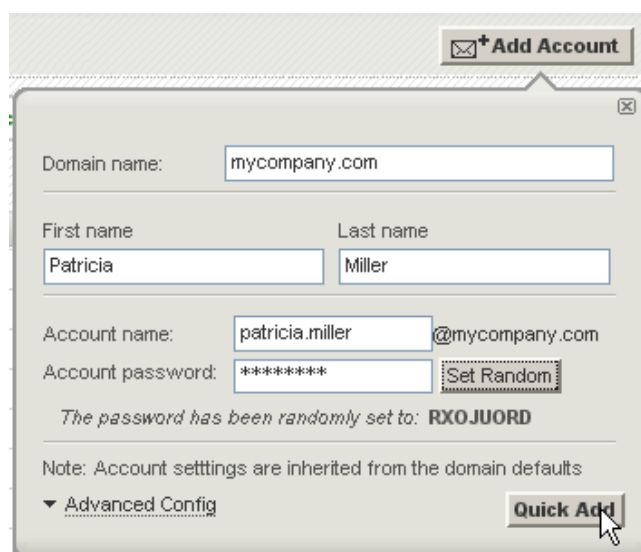


Figure 19: Adding a new account to an existing domain.

Quick Installation and Configuration Guide

- To add the account, press the **Quick Add** button. For advanced account settings, press the Advanced Config link and the pages below will be displayed. Edit the account-specific parameters to suit your needs or leave them with their default values. An in-depth presentation of AXIGEN account-specific parameters is beyond the purpose of this *Quick Installation and Configuration Guide*. For more relevant information, please refer to the product's [System Administrator's Manual](#).

The screenshot shows a web-based configuration interface for an email account. At the top, there are five tabs: 'General', 'Account Aliases', 'Quotas and Restrictions', 'Webmail Options', and 'Message Filters'. The 'General' tab is active. Below the tabs is a 'Settings' window. It contains several input fields: 'First name' with the value 'Patricia', 'Last name' with 'Miller', 'Account name' with 'patricia.miller' and '@mycompany.com', and 'Account password' with '*****'. There is a 'Set Random' button next to the password field. At the bottom, there is a dropdown menu labeled 'Inherit configuration details from:' with a list of options: 'mycompany.com default' (highlighted), 'Management', 'Marketing', and 'Sales'. A mouse cursor is pointing at the 'mycompany.com default' option.

Figure 20: The Account Pages.

- Press the **Save Configuration** button to save your changes.

You have successfully added the 'patricia.miller' account to the 'mycompany.com' domain. For further details on accounts advanced settings, see Accounts section.

Connecting ClamAV and SpamAssassin

To make sure your mail traffic is free of viruses or spam, connect the ClamAV Antivirus application and SpamAssassin Anti-spam application.

AXIGEN implements a proprietary filter scripting language that allows you to implement connectors for any Antivirus and Antispam applications. By default, AXIGEN comes with connectors for ClamAV Antivirus and SpamAssassin Anti-spam applications.

Starting with version 5.0, the SpamAssassin application is bundled (meaning it is included in the AXIGEN installation kit). In order to start the Bundled SpamAssassin, you need to run the "axigenfilters" script. The start/stop/restart actions for the 'axigenfilters' script, follow the instructions in the corresponding [online documentation chapter](#).

For details on integrating ClamAV, please see the [dedicated article](#) on our site.

Accessing AXIGEN WebMail

Now that your mail server is fully functional, you can access WebMail to send and receive test messages.

WebMail can be accessed at the default address: <http://127.0.0.1:8000/>.

Use one of the email accounts created using the procedure in [Adding an Account to an Existing Domain](#), to log on to AXIGEN WebMail. Enter the full email address in the username field.



Figure 21: WebMail Login Page

Configuring Other Services

You can enable the WebMail module from the "**Services Management**" tab. Make sure you also configure the "**Listeners**" from the "**WebMail**" tab so that WebMail can be accessed via this IP/port address.

Quick Installation and Configuration Guide

Important: There is one "**Listeners**" section on the service configuration page for each AXIGEN service. Make sure you configure correctly the listeners for each service you want to run. At a minimum, you should configure the Listeners for the "**SMTP-In**", "**POP3**", "**WebMail**" services, using corresponding IP/port addresses.

Now you have successfully installed AXIGEN Mail Server and created a new domain and a new account. This completes your quick installation and configuration training. Your AXIGEN Mail Server is currently functional.

Advanced Configuration Options for the AXIGEN Mail Server

After going through the installation and initial configuration steps, AXIGEN Mail Server is working based on its default server configuration file (axigen.cfg). You can subsequently use the following methods to obtain the most out of your AXIGEN Mail Server:

- Use AXIGEN WebAdmin interface to configure AXIGEN Mail Server – the easiest and most recommended method;
- Use AXIGEN command-line interface (CLI) to configure AXIGEN Mail Server;
- manually edit the configuration file.

For more information about these advanced configuration options available in the AXIGEN Mail Server, please consult the product's the [Online documentation](#).

Working with AXIGEN's Personal Organizer

Having time management and mobility needs in mind, starting with version 4.0 a Personal Organizer module is available from both AXIGEN's WebMail interface and the email client Outlook. The



Figure 22: AXIGEN Outlook Connector Setup Wizard

Personal Organizer is therefore available for Business, Enterprise and ISP Editions of AXIGEN and comprises tools such as calendar, tasks, journal, notes and collaborative support. The newly implemented AXIGEN Outlook Connector enhances the communication of Microsoft's email client with the AXIGEN server, thus making the Personal Organizer available for Outlook users.

Furthermore, the AXIGEN Outlook Connector, a fresh application which allows Microsoft Outlook users to take full advantage of all AXIGEN's features & capabilities, is also provided to our users. The AXIGEN Outlook Connector 6.0 implements most Exchange-like features, including server-side

Search Folders (such as Unread messages or Large Messages) which enables users to easily locate messages based on various filters. The new application also allows new folders creation on the server directly from Outlook.

For a detailed usage description for the Personal Organizer in AXIGEN's WebMail Interface, please see the [corresponding chapter](#) of the online documentation. For instructions on Calendar, Notes, Journal and Tasks usage in Outlook, please see the application's help.

For complete information on how to install the AXIGEN Outlook Connector and on how to further configure your Outlook email client, see the [corresponding section](#) of our online documentation.

Configuring Mail Clients for Use with AXIGEN

Apart from AXIGEN WebMail, you can use various IMAP and POP mail clients to retrieve your AXIGEN mail. Each email client requires a specific configuration procedure when setting up your IMAP/POP service. Here are the configuration steps for some of the most common email clients (compatible with AXIGEN Mail Server). To see instructions for other compatible mail clients, see the corresponding articles in the [AXIGEN Knowledgebase](#).

How to Set up Your POP3 account

Outlook Express 6

1. Open Outlook Express.
2. Click the 'Tools' menu, and select 'Accounts...'.- 3. Click 'Add', and then click 'Mail...'.- 4. Enter your name in the 'Display name:' field (e.g. 'John Doe'), and click 'Next'.- 5. Enter your full email address in the 'Email address:' field (e.g. 'john.doe@example.com'), and click 'Next'.- 6. Select POP3 as your incoming mail server, enter the AXIGEN POP server name in the 'Incoming mail (POP3, IMAP or HTTP) server:' field and enter the AXIGEN SMTP server name in the 'Outgoing mail (SMTP) server:' field.- 7. Click 'Next'.- 8. Enter your username in the 'Account name:' field (e.g. 'john.doe@example.com'). Enter your password in the 'Password:' field, and click 'Next'.- 9. Click 'Finish'.

If the server requires POP3/SMTP over SSL, continue with the following:

10. Select your account and click 'Properties'.- 11. Click the 'Advanced' tab.- 12. Check the box next to 'This server requires a secure connection (SSL)' under 'Incoming mail (POP3)'. The port will change to 995.- 13. Check the box next to 'This server requires a secure connection (SSL)' under 'Outgoing Mail (SMTP)'.- 14. Enter '465' in the 'Outgoing mail (SMTP):' field.

If the outgoing (SMTP) server requires authentication (default in AXIGEN), continue with the following, else jump to step 16:

15. Click the 'Servers' tab, and check the box next to 'My server requires authentication'.- 16. Click 'OK'.

Mozilla Thunderbird

1. Open Mozilla Thunderbird.- 2. Click the 'Tools' menu, and select 'Account Settings...'.- 3. Click 'Add Account'.- 4. Select 'Email account' and click 'Next'.- 5. Enter your full name in the 'Your Name:' field (e.g. 'John Doe').- 6. Enter your full email address (e.g. john.doe@example.com) in the 'Email Address:' field, and click 'Next'.

Quick Installation and Configuration Guide

7. Select 'POP3' as the type of incoming server you are using.
8. Enter the AXIGEN POP3 server address in the 'Incoming Server:' field, and click 'Next'.
9. Enter your username including the domain name (e.g. 'john.doe@example.com') in the 'Incoming User Name:' field, and click 'Next'.
10. Enter a name for your email account in the 'Account Name:' field, and click 'Next'.
11. Verify your account information in the dialogue box, and click 'Finish'.

If the server requires POP3/SMTP over SSL, continue with the following:

12. Click the 'Server Settings' tab.
13. Select 'SSL' from the 'Use Secure Connection' option.
14. Click the 'Outgoing Server (SMTP)' tab, select your account SMTP server, press 'Edit' and select 'SSL' from the 'Use Secure Connection' option.

If the outgoing (SMTP) server requires authentication (default in AXIGEN), continue with the following, else jump to step 16:

15. Check the box next to 'Use name and password' and enter your username, including the domain name (e.g. 'john.doe@example.com').

Make sure you use the AXIGEN SMTP server for outgoing messages:

16. Click your account SMTP server, then click 'Set Default'.
17. Click 'OK'.

How to Set Up Your IMAP account

Outlook Express 6

1. Open Outlook Express.
2. Click the 'Tools' menu, and select 'Accounts...'
3. Click 'Add', and then click 'Mail...'
4. Enter your name in the 'Display name:' field (e.g. 'John Doe'), and click 'Next'.
5. Enter your full email address in the 'Email address:' field (e.g. 'john.doe@example.com'), and click 'Next'.
6. Select IMAP as your incoming mail server, enter the AXIGEN IMAP server name in the 'Incoming mail (POP3, IMAP or HTTP) server:' field and enter the AXIGEN SMTP server name in the 'Outgoing mail (SMTP) server:' field.
7. Click 'Next'.
8. Enter your username in the 'Account name:' field (e.g. 'john.doe@example.com'). Enter your password in the 'Password:' field, and click 'Next'.
9. Click 'Finish'.

If the server requires IMAP/SMTP authentication over SSL, continue with the following:

10. Select your account and click 'Properties'.
11. Click the 'Advanced' tab.
12. Check the box next to 'This server requires a secure connection (SSL)' under 'Incoming mail (IMAP)'. The port will change to 993.
13. Check the box next to 'This server requires a secure connection (SSL)' under 'Outgoing Mail (SMTP)'.
14. Enter '465' in the 'Outgoing mail (SMTP):' field.

Quick Installation and Configuration Guide

If the outgoing (SMTP) server requires authentication (default in AXIGEN), continue with the following, else jump to step 16:

15. Click the 'Servers' tab, and check the box next to 'My server requires authentication'.
16. Click 'OK'.

Mozilla Thunderbird

1. Open Mozilla Thunderbird.
2. Click the 'Tools' menu, and select 'Account Settings...'
3. Click 'Add Account'.
4. Select 'Email account' and click 'Next'.
5. Enter your full name in the 'Your Name:' field (e.g. 'John Doe').
6. Enter your full email address (e.g. john.doe@example.com) in the 'Email Address:' field, and click 'Next'.
7. Select 'IMAP' as the type of incoming server you are using.
8. Enter the AXIGEN IMAP server address in the 'Incoming Server:' field, and click 'Next'.
9. Enter your username including the domain name (e.g. 'john.doe@example.com') in the 'Incoming User Name:' field, and click 'Next'.
10. Enter a name for your email account in the 'Account Name:' field, and click 'Next'.
11. Verify your account information in the dialogue box, and click 'Finish'.

If the server requires IMAP/SMTP over SSL, continue with the following:

12. Click the 'Server Settings' tab.
13. Check the box next to 'Use Secure Connection (SSL)'.
14. Click the 'Outgoing Server (SMTP)' tab and check 'SSL'.

If the outgoing (SMTP) server requires authentication, continue with the following, else jump to step 16:

15. Check the box next to 'Use name and password' and enter your username, including the domain name (e.g. 'john.doe@example.com').

Make sure you use the AXIGEN SMTP server for outgoing messages:

16. Click the 'Server Settings' tab again, click the 'Advanced' button, then click the 'SMTP' tab.
17. Select the AXIGEN SMTP server address from the drop-down box as your outgoing SMTP server.
18. Click 'OK'.
19. Click 'OK'.