

AXIGEN Mail Server

Quick Installation and Configuration Guide

Product version: 6.x
Document version: 1.0

Last Updated on: December 23, 2008

Copyright & trademark notices

This edition applies to version 6.x of the licensed program AXIGEN and to all subsequent releases and modifications until otherwise indicated in new editions.

Notices

References in this publication to GECAD TECHNOLOGIES S.A. products, programs, or services do not imply that GECAD TECHNOLOGIES S.A. intends to make these available in all countries in which GECAD TECHNOLOGIES S.A. operates. Evaluation and verification of operation in conjunction with other products, except those expressly designated by GECAD TECHNOLOGIES S.A., are the user's responsibility. GECAD TECHNOLOGIES S.A. may have patents or pending patent applications covering subject matter in this document. Supplying this document does not give you any license to these patents. You can send license inquiries, in writing, to the GECAD TECHNOLOGIES S.A. sales department, sales@AXIGEN.com.

Copyright Acknowledgement

(c) GECAD TECHNOLOGIES S.A. 2008. All rights reserved.

All rights reserved. This document is copyrighted and all rights are reserved by GECAD TECHNOLOGIES S.A. No part of this document may be reproduced or transmitted in any form or by any means, electronic or mechanical, including photocopying and recording, or by any information storage and retrieval system without the permission in writing from GECAD TECHNOLOGIES S.A.

The information contained in this document is subject to change without notice. If you find any problems in the documentation, please report them to us in writing. GECAD TECHNOLOGIES S.A. will not be responsible for any loss, costs or damages incurred due to the use of this documentation.

AXIGEN™ Mail Server is a SOFTWARE PRODUCT of GECAD TECHNOLOGIES S.A. GECAD TECHNOLOGIES and AXIGEN™ are trademarks of GECAD TECHNOLOGIES S.A. Other company, product or service names may be trademarks or service marks of others.

GECAD TECHNOLOGIES S.A.

10A Dimitrie Pompeiu Blvd., Connect Business Center, 2nd fl., Bucharest 2, ROMANIA;
phone: +40-21-303-2080; fax: +40-21-303-2081; e-mail:

Sales: sales@axigen.com

Technical support: support@axigen.com

Website: <http://www.axigen.com>

(c) Copyright GECAD TECHNOLOGIES S.A. 2008. All rights reserved.

Table of Contents

Table of Contents	3
Chapter 1: Introduction	4
1.1 Welcome	4
1.2 Purpose of this document	4
1.3 Related documentation	4
1.4 About AXIGEN® Mail Server	5
1.4.1 What is AXIGEN Mail Server?	5
1.4.2 Modular architecture.....	5
1.4.3 AXIGEN Availability.....	6
1.4.4 AXIGEN components	6
1.4.5 Configuration	6
Chapter 2: Installing AXIGEN on Linux.....	7
2.1 The Linux Installation Kit	7
2.2 Installation Steps	7
Chapter 3: Installing AXIGEN on Windows.....	9
3.1 The Microsoft Windows Installation Kit	9
3.2 Installation Steps	9
3.3 Files and Directories installed by the AXIGEN package.....	9
Chapter 4: Configure and Work with AXIGEN.....	11
4.1 Running the AXIGEN Configuration Wizard for Linux Distributions	11
4.2 Running the AXIGEN Configuration Wizard for Microsoft Windows	16
Chapter 5: Working with WebAdmin	19
5.1 Creating a New Domain	19
5.2 Adding an Account	22
5.3 Connecting ClamAV , SpamAssassin and Commtouch	24
5.4 Accessing AXIGEN WebMail.....	24
5.5 Configuring Other Services.....	25
5.6 Advanced Configuration Options for the AXIGEN Mail Server	25
5.7 Working with AXIGEN's Personal Organizer	25
5.8 Configuring Mail Clients for Use with AXIGEN.....	26
5.8.1 Setting up Your POP3 account for Outlook Express 6.....	26
5.8.2 Setting up Your POP3 account for Mozilla Thunderbird.....	27
5.8.3 Setting Up Your IMAP account for Outlook Express 6.....	28
5.8.4 Setting Up Your IMAP account for Mozilla Thunderbird.....	28

Chapter 1: Introduction

1.1 *Welcome*

Dear user, you are testing or you have acquired AXIGEN Mail Server, the right choice for your e-mail messaging system for Linux and Windows. As you will soon realize, the server is very easy to administrate and benefits from efficient technical support which makes AXIGEN the ideal choice as a messaging system in any environment.

1.2 *Purpose of this document*

The purpose of this document is to provide a quick guide for the installation and configuration processes of AXIGEN mail server. The document will take you through the installation process and then enable you to initiate the configuration process. The initial configuration process described in this document will include basic options such as creating accounts and domains with WebAdmin, one of the multiple configuration options available in AXIGEN Mail Server.

This guide provides a detailed procedure for connecting the ClamAV, SpamAssassin and Commtouch applications, and also configuring compatible mail clients to work with AXIGEN.

For an in-depth overview of the configuration process and other configuration options, please consult AXIGEN [online documentation](#).

1.3 *Related documentation*

Additional information regarding AXIGEN can be found in the following documents:

- AXIGEN Online Documentation: <http://www.axigen.com/docs/en/>
- AXIGEN Knowledgebase, available on <http://www.axigen.com/knowledgebase/index.php>
- AXIGEN Forum, available on <http://www.axigen.com/forum/>

1.4 About AXIGEN® Mail Server

1.4.1 What is AXIGEN Mail Server?

Keeping an eye on the current market and end user requirements GECAD Technologies brought its new product 'AXIGEN Mail Server', with advanced technologies and messaging services. AXIGEN Mail Server is an Internet-based mail server that provides messaging services over the Internet via connections using a Transmission Control Protocol/Internet Protocol (TCP/IP) network.

AXIGEN Mail Server sends mail messages using the Simple Mail Transfer Protocol (SMTP) Messages can be retrieved using the Post Office Protocol version 3 (POP3), the Internet Message Access Protocol (IMAP) and HTTP protocol (HTTP). For remote users AXIGEN offers as a WebMail module.

The administration is easily done through a web interface (WebAdmin), Command Line Interface (CLI) or configuration file.

AXIGEN MAIL SERVER is specifically designed for use in small businesses, corporate environments or at ISPs.

1.4.2 Modular architecture

AXIGEN® Mail Server works on a modular architecture including current advanced Internet messaging protocols/services. The figure below explains all modules of AXIGEN mail server:

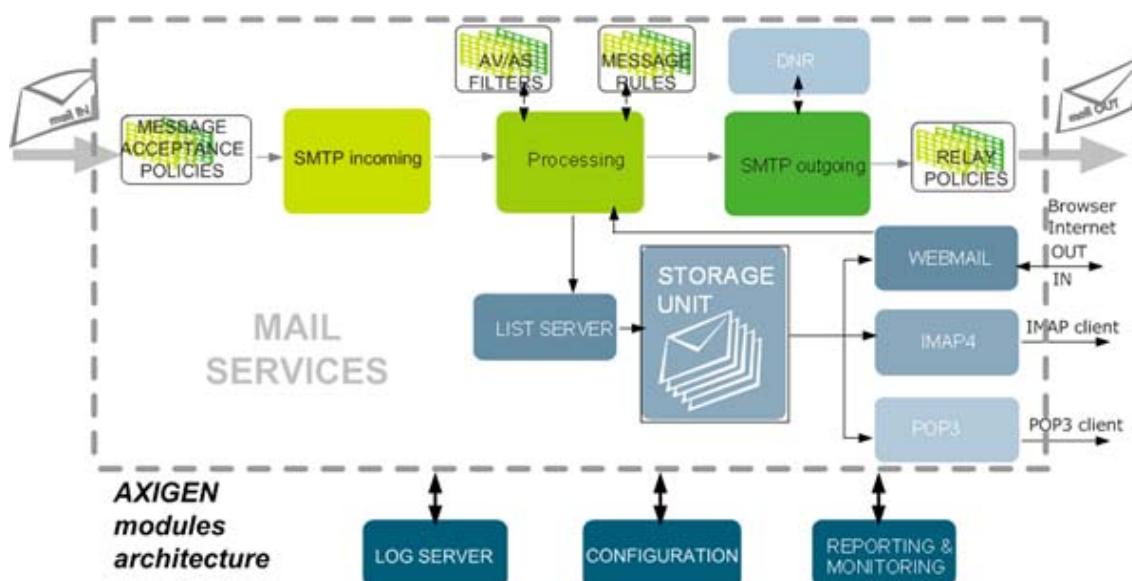


Figure 1: AXIGEN modular structure

The above figure presents the mail messages flow inside the AXIGEN mail server. The message goes through various modules in the server and gets delivered securely to its destination.

1.4.3 AXIGEN Availability

Currently AXIGEN is available as AXIGEN Evaluation version, and as commercial editions: AXIGEN Office Edition Free, AXIGEN Business Edition, AXIGEN Service Provider Edition and AXIGEN Enterprise Edition.

The AXIGEN kit is available for download ONLY as evaluation version. You can switch at any moment to a commercial edition by following a simple one-time purchase / registration process.

Should you be happy with evaluating AXIGEN, there is a very simple process to use one of the available AXIGEN Editions, while keeping the current configuration. All you have to do is to install the License key received after the purchasing/registration process.

After purchase, you will receive the Registration Code, you should use it to register on <http://www.axigen.com> and receive your own License Key.

To see a detailed description of our products, please visit the [corresponding section](#) of our site.

1.4.4 AXIGEN components

All AXIGEN Mail Server modules: SMTP Incoming, Processing, SMTP Outgoing, Storage Unit, POP3, IMAP4, POP3 Proxy, IMAP Proxy, WebMail, List Server, Log server, Reporting and FTP Backup that define the AXIGEN Architecture are described in [the dedicated chapter of our Online Documentation](#).

1.4.5 Configuration

AXIGEN is delivered with fully functional configuration settings. You can change the mail server's configuration to suit your needs and network specifics using the general server configuration file (called axigen.cfg), the WebAdmin interface or the command line interface (CLI). This Quick Installation and Configuration document presents the installation procedure and the initial configuration steps to be taken using WebAdmin, the recommended configuration option. For details on the other configuration options available with AXIGEN, please consult the product's [online documentation](#).

Chapter 2: Installing AXIGEN on Linux

This chapter includes the step-by-step description of the AXIGEN mail server installation and configuration for Linux distributions. However, AXIGEN Mail Server is also available on FreeBSD, OpenBSD, NetBSD and on Solaris 10. For BSD and Solaris installation instructions, please see the [Online documentation](#).

Before installing AXIGEN, it is highly recommended to check the product software/hardware requirements and the list of supported platforms, all available [here](#).

2.1 The Linux Installation Kit

The installation kit contains the evaluation version of AXIGEN Mail Server and is available for download or on CD.

The AXIGEN installation kit available on CD includes two main directories:

- **doc**
- **install.**

The **doc** directory contains all the product-related documentation files; the **install** directory contains the installation related files for supported distributions on i386, PowerPC and SPARC platforms. It also contains AXIGEN Outlook Connector installation kits.

The AXIGEN installation kit available on <http://www.axigen.com/mail-server/download/> contains the installation related files for supported Linux distributions on i386 platforms and BSD supported versions.

2.2 Installation Steps

Here are the common steps required when installing the AXIGEN mail server on Linux platforms:

- **Download the required package** (select the specific package according to your Linux distribution) or **browse the AXIGEN Installation CD**. This installation kit contains the evaluation version of AXIGEN Mail Server.
- **Unpack the original installation kit**. Use the installation kit provided by our partner or the kit downloaded directly from our website. Unpack it using the standard **tar** command:

```
tar xzvf <install-kit-file>
```

For example, to unpack the AXIGEN RPM package for the i386 architecture, type in the same directory as the file:

```
tar xzvf axigen-6.x.i386.rpm.gcc3.tar.gz
```

- **Login as root.**
- **Install AXIGEN** using the standard package management application, specific to your distribution. For example, in order to install the RPM package, you should use the **rpm** command, from the same directory as the AXIGEN RPM file:

```
rpm -ivh axigen-version.<arch>.rpm
```

For example, to install the rpm version 6.x for i386 architecture, the exact command is:

```
rpm -ivh axigen-6.(x+1)-1.i386.rpm
```

Note: Find more information on AXIGEN® installation in the INSTALL file of your Installation Kit.
--

- **Configure AXIGEN:** Before starting AXIGEN Mail Server, you should adjust some settings, according to your specific environment (for instance setting the admin password or enabling the default WebAdmin listener). You can do that by running the AXIGEN Configuration Wizard. For more details, please refer to the Configuration Chapter in this document.
- **Stop any other mail services (Sendmail, Postfix, IMAPD, Dovecot) or web services (Apache) currently running in your system.** If you fail to do that, the corresponding AXIGEN Services will be disabled when first starting AXIGEN.
- **Start the AXIGEN server:** To start the server, issue commands specific to your Linux distribution. For instance, under RedHat and SUSE distributions, the AXIGEN server can be started by issuing

```
/etc/init.d/axigen start
```

- **Create domains/accounts for your AXIGEN® installation.**

For more information about how to create domains/accounts in AXIGEN, please refer to the [Creating a New Domain](#) section of this document.

Chapter 3: Installing AXIGEN on Windows

The following section describes how to install the AXIGEN Mail Server on the Microsoft Windows Server 2003 and Windows XP Professional operating systems.

3.1 The Microsoft Windows Installation Kit

The installation kit contains the evaluation version of AXIGEN Mail Server and is available for download or on CD.

The AXIGEN installation kit available for download on <http://www.axigen.com/mail-server/download/> contains the installation related files for Microsoft Windows Server 2003 and Windows XP Professional operating systems.

3.2 Installation Steps

Here are the common steps required when installing the AXIGEN mail server on Microsoft Windows Server 2003 and Windows XP Professional operating systems:

1. Launch the AXIGEN installation wizard

Double-click on the MSI installation file. The installation wizard will then be launched and guide you through the installation steps.

2. AXIGEN Initial Configuration

After the installation completes, the AXIGEN Configuration Wizard will start and help you automatically configure the AXIGEN Mail Server. For a thorough step-by-step walkthrough see chapter [4.2 Running the AXIGEN Configuration Wizard for Microsoft Windows](#) in this document.

3. Start the AXIGEN Mail Server

In Windows, AXIGEN can be started or stopped via the Services console from Administrative Tools. These are the following scenarios for opening the Services Console:

- **From the Control Panel as expanded menu:**
Start menu -> Settings -> Control Panel -> Administrative Tools -> Services
- **From Control Panel as window switched to "Category view"** (default in Windows XP):
*Start menu -> Settings -> Control Panel;
Performance and Maintenance -> Administrative Tools -> Services*
- **From Control Panel as window switched to "Classic view":**
Start menu-> Settings -> Control Panel; Administrative Tools -> Services
- **Directly from command line:**
Start menu-> Run option; "%SystemRoot%\system32\services.msc"

3.3 Files and Directories installed by the AXIGEN package

The files and directories installed by the AXIGEN package are divided in 2 locations, called "install directory" and "working directory". They will be further referred to as **INSTALLDIR** and **WORKINGDIR**. By default, both locations are set in the **Program Files** folder from the system disk partition (%ProgramFiles%), and the **Axigen Mail Server** subfolder. The info in the table below is also available in the Readme .txt file included in the AXIGEN installation kit:

Directory/File	Description
INSTALLDIR\	
INSTALLDIR\axigen.exe	This is the AXIGEN daemon.
INSTALLDIR\AxiWizard.exe	This is the AXIGEN Configuration Wizard.
INSTALLDIR\doc\	
INSTALLDIR\doc\RELEASE-NOTES.txt	These are the product release notes for the current AXIGEN release.
INSTALLDIR\doc\README.txt	This is the Readme .txt file.
INSTALLDIR\doc\LICENSE.txt	Document containing the license for the AXIGEN Mail Server.
INSTALLDIR\doc\LICENSE-others.txt	This document contains various external library collections included in AXIGEN (OpenSSL, PCRE, ICU, GD, BSD, Yahoo! Domain-Keys).
INSTALLDIR\examples\	This is the directory with sample configuration files.
INSTALLDIR\examples\axigen.cfg	This is a sample configuration file.
INSTALLDIR\examples\smtpFilters.script	This is a sample SMTP script file.
WORKINGDIR\	
WORKINGDIR\run\	
WORKINGDIR\run\axigen.cfg	This is the main configuration file for the AXIGEN server.
WORKINGDIR\filters\	This directory contains various filtering script files (AFSL, Sieve, SMTP).
WORKINGDIR\webmail\	This is the default directory used for storing files pertaining to the AXIGEN WebMail module.
WORKINGDIR\webadmin\	This is the default directory used for storing files pertaining to the AXIGEN WebAdmin module.
WORKINGDIR\mobile_ua.cfg	This is the default mobile user agents detection configuration file.

Chapter 4: Configure and Work with AXIGEN

This chapter provides complete description on how to work with AXIGEN Mail Server.

4.1 Running the AXIGEN Configuration Wizard for Linux Distributions

Aiming to enhance, simplify and render the initial setup automatic, the AXIGEN Mail server includes the **AXIGEN Configuration Wizard**. In eleven easy steps, the wizard enables system administrators to instantly set the admin password, configure the primary domain and set up an interface for the WebAdmin management tool and also for the POP3 and IMAP services. These actions were previously performed partly manually, partly using the WebAdmin interface.

The AXIGEN Configuration Wizard is provided as part of all the AXIGEN Mail Server 6.x installation packages, available for download on the AXIGEN site.

Firstly, the wizard needs to be launched by issuing one of the following commands, depending on the platform you have installed the AXIGEN Mail Server on:

1. On Solaris and all Linux platforms:

`/opt/axigen/bin/axigen-cfg-wizard`

2. On OpenBSD and FreeBSD:

`/usr/local/bin/axigen-cfg-wizard`

3. On NetBSD:

`/usr/pkg/bin/axigen-cfg-wizard`

1. Configuring the Admin Password

After launching the AXIGEN Configuration Wizard, the first step you are prompted to take is specify the admin password. The password is required and therefore system administrators must type at least one character.

Use the Password field to type your password and the Validate field to retype it for validation.

To move from one field to another, please use the Tab or Enter keys. To proceed to the next step, when located on the Next button, press the Enter key.

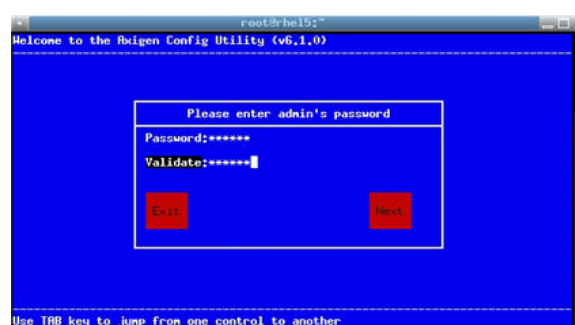


Figure 2: Setting the Admin Password

2. Configuring your Primary Domain

The next stage of running the wizard consists in configuring AXIGEN's primary domain. The wizard will automatically detect the machine's FQDN (Fully Qualified Domain Name) and based on it will propose the domain name as primary. If no domain can be detected, the default 'localdomain' will be displayed. System administrators can edit the fields of this tab at any time.

In the Primary Domain field, the wizard will display the automatically detected domain. Use the Domain Location field to edit the default storage path for the primary domain, `/var/opt/axigen/domains`. To configure the primary domain password for the account postmaster, use the Postmaster account password field.

To move from one field to another, please use the Tab or Enter keys. To proceed to the next step, when located on the Next button, press the Enter key.

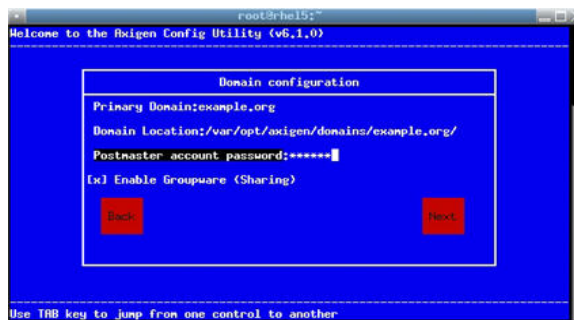


Figure 3: Primary Domain configuration

3. Alias Configuration

When running the wizard, this step allows system administrators to select the alias they would like to configure for the primary domain defined at the previous step. There are three available options:

- Redirect all mails for root account to postmaster
- Add the 'localhost' alias to this domain
- Add the 'localhost.localdomain' alias to this domain

To select or deselect one of the listed options, press **Enter**.

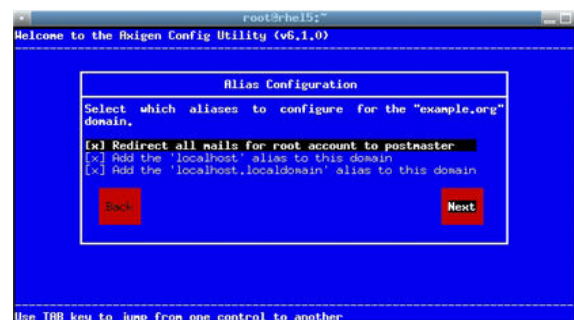


Figure 4: Alias Settings

4. Configuring the WebAdmin Interface

This following step performed by the AXIGEN Configuration Wizard is to select the WebAdmin Interface.

The wizard will list all the existing interfaces with their respective IP addresses and ports, enabling system administrators to select a listener for WebAdmin. In the previous versions, the WebAdmin was initially accessed on its default listener, <http://127.0.0.1:9000/>.

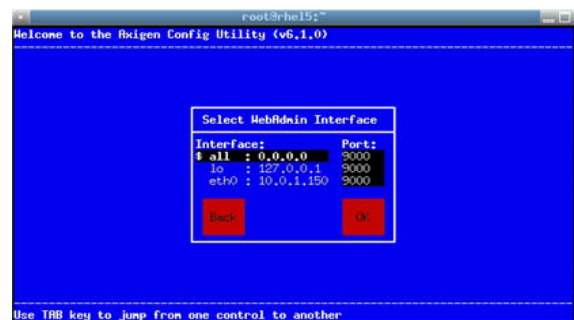


Figure 5: Adding a new domain

Select one of the listed interfaces, then move to the OK button (using the Tab or Enter keys) and then press Enter again.

If you choose the first option, all, all the listed interfaces will be used as listeners for the WebAdmin management tool. If you choose a different interface, you will be prompted to confirm the choice you have made.

5. Configuring the SMTP Interface

The next step performed by the AXIGEN Configuration Wizard is to select the SMTP Interface. The wizard will list all the existing interfaces with their respective IP addresses and ports, enabling system administrators to select a listener for SMTP.

Select one of the listed interfaces, then move to the OK button (using the Tab or Enter keys) and then press Enter again. If you choose the first option, all, all the listed interfaces will be used as listeners for the SMTP service. If you choose a different interface, you will be prompted to confirm the choice you have made.



Figure 6: SMTP Interface Selection

6. Services Selection

The sixth step of the automatic configuration process allows system administrators to select the active services for the AXIGEN server. For each of the selected services, POP3, IMAP or WebMail, further settings are available within the following steps. If none of the three services is enabled, the wizard will skip directly to step 10 of the configuration. To select or deselect one of the listed options, press Enter.



Figure 7: Selecting Services

7. Configuring the POP 3 Interface

The next step performed by the AXIGEN Configuration Wizard is to select the POP3 Interface. The wizard will list all the existing interfaces with their respective IP addresses and ports, enabling system administrators to select a listener for the POP3 service.

Select one of the listed interfaces, then move to the OK button (using the Tab or Enter keys) and then press Enter again. If you choose the first option, all, all the listed interfaces will be used as listeners for the

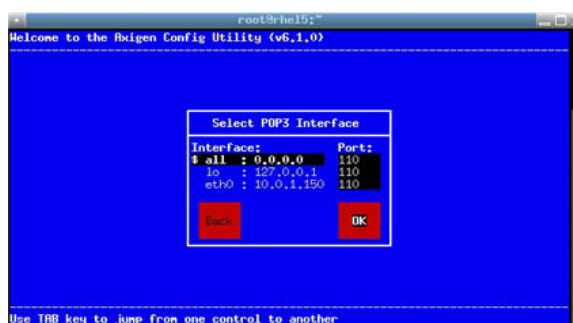


Figure 8: POP3 Interface Selection

POP3 service. If you choose a different interface, you will be prompted to confirm the choice you have made.

8. Configuring the IMAP Interface

Step 8 performed by the AXIGEN Configuration Wizard is to select the IMAP Interface. The wizard will list all the existing interfaces with their respective IP addresses and ports, enabling system administrators to select a listener for the POP3 service.

Select one of the listed interfaces, then move to the OK button (using the Tab or Enter keys) and then press Enter again. If you choose the first option, all, all the listed interfaces will be used as listeners for the POP3 service. If you choose a different interface, you will be prompted to confirm the choice you have made.

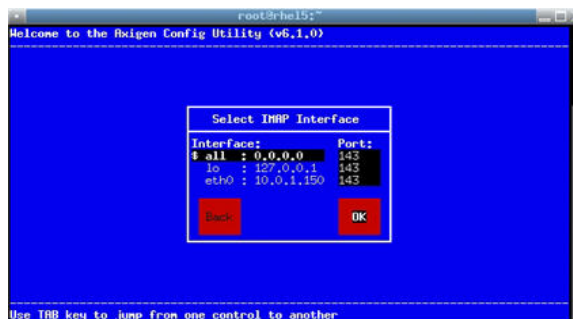


Figure 9: IMAP Interface Selection

9. Configuring the WebMail Interface

For the next step, the AXIGEN Configuration Wizard will allow system administrators to select the WebMail Interface. The wizard will list all the existing interfaces with their respective IP addresses and ports, enabling system administrators to select a listener for the WebMail service.

Select one of the listed interfaces, then move to the OK button (using the Tab or Enter keys) and then press Enter again. If you choose the first option, all, all the listed interfaces will be used as listeners for the WebMail service. If you choose a different interface, you will be prompted to confirm the choice you have made.

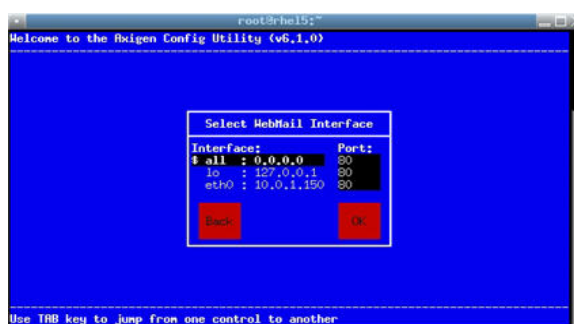


Figure 10: WebMail Interface Selection

10. Configuring Relay Policies

The AXIGEN Configuration Wizard will then prompt system administrators to select the networks allowed to relay emails through the AXIGEN server without prior authentication. To select or deselect one of the listed options, press Enter.

When one of the available networks is selected, a script configuring a Relay Policy is automatically created.

For details on Relay Polices, please see the [corresponding section](#) of the online documentation.

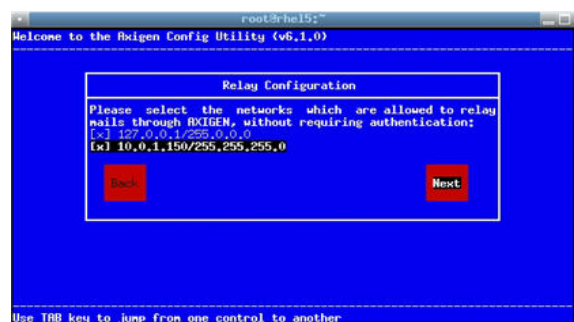


Figure 11: Relay Policies Configuration

11. Sendmail Wrapper Configuration

This configuration step is required if system administrators want command line applications such as mailx to be able to send emails via AXIGEN. Such applications use the Sendmail Wrapper which thus needs to be configured to work correctly with AXIGEN.

The Wizard describes in detail the actions taken when selecting "Yes" at this step.

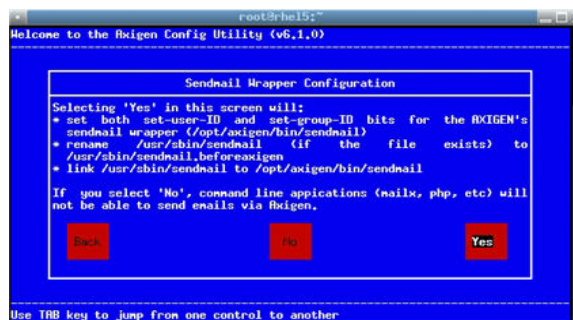


Figure 12: SendMail Wrapper Configuration

The Wizard will initially display a message prompting you to wait for the changes to be applied to your existing configuration and will then respond with a successful operation message. After completing these steps, the wizard will display a message summarizing the steps just taken. It will also instruct system administrators to start the AXIGEN service and then access the WebAdmin interface on the selected IP-port combination.

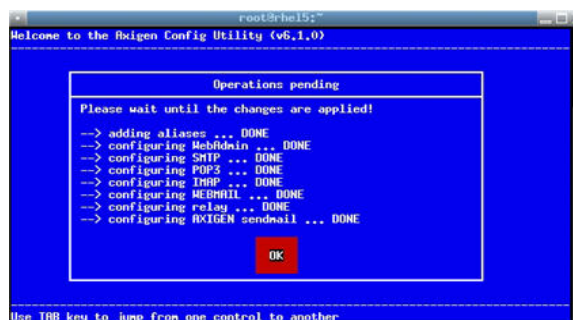


Figure 13: Success Message

Troubleshooting

Firstly, on some distributions, the operating system sets the console display encoding to UTF-8. Thus all the wizard's messages would be displayed incorrectly. For troubleshooting, please consult this [Knowledgebase article](#).

Secondly, if any other message except the successful one is displayed by the wizard after taking the configuration steps, please contact the AXIGEN Support team at support@axigen.com.

4.2 Running the AXIGEN Configuration Wizard for Microsoft Windows

The AXIGEN Configuration Wizard is provided as part of all the AXIGEN Mail Server 6.x installation packages. Starting with version 6.x, the AXIGEN Mail server also includes an **AXIGEN Configuration Wizard** for Microsoft Windows. Aiming to enhance, simplify and render the setup automatic, the wizard follows seven easy steps and thus enables system administrators to instantly set the administrator password, configure the primary domain and select the active services for the AXIGEN server.

1. Launching the AXIGEN Configuration Wizard

From the **Start** menu of the Microsoft Windows operating system, locate the **Axigen Mail Server** entry in the **Programs** list and highlight it. A couple of AXIGEN shortcuts will then be displayed on the right. Left click on the **Axigen Config Wizard** option to launch the wizard.



Figure 14: AXIGEN Configuration Wizard

2. Configuring the Admin Password

After starting the AXIGEN Configuration Wizard, the first step you are prompted to take is to specify the admin password. The password is mandatory, therefore system administrators must type one in and confirm it.



Figure 15: Configuring the Admin Password

3. Configuring Your Primary Domain

The next stage of running the wizard consists in configuring AXIGEN's primary domain. The wizard will automatically detect the machine's FQDN (Fully Qualified Domain Name) and based on it will propose the domain name as primary. If no domain can be detected, the default 'localdomain' will be displayed. System Administrators can edit the fields of this tab at any time.

In the **Domain name** field, the wizard will display the automatically detected domain. Use the **Domain Location** field to edit the default storage path for the primary domain, C:\Program Files\Axigen Mail Server\domains. To configure the primary domain password for the account postmaster, use the **Postmaster account password** field.



Figure 16: Configuring Your Primary Domain

To proceed to the next step, left click on the **Next** button.

4. Alias Configuration

When running the wizard, this step allows system administrators to select the alias they would like to configure for the primary domain defined at the previous step. There are two available options:

- Add the 'localhost' alias to this domain
- Add the 'localhost.localdomain' alias to this domain

Check the box in front of the option you want to enable and then left click on **Enter** to proceed to the next configuration step.



Figure 17: Alias Configuration

5. WebAdmin Services Selection

The fifth step of the automatic configuration process allows system administrators to select the active common services for the AXIGEN server, as well as the listening interfaces and ports for each of them.



Figure 18: WebAdmin Services Selection

6. Configuring Relay Policies

The AXIGEN Configuration Wizard will then prompt system administrators to select the networks allowed to relay emails through the AXIGEN server without prior authentication. Check or uncheck the box in front of the option you want to enable, respectively disable.

When one of the available networks is selected, a script configuring a Relay Policy is automatically created. For details on Relay Policies, please see the [corresponding section](#) of the online documentation.

To finish the configuration process, left click on the **Finish** button.



Figure 19: Configuring Relay Policies

7. Completing the AXIGEN Configuration Wizard

Within the last step of the configuration wizard, all settings made at the previous phases are now put into practice. The screen will first display the full list of configurations that need to be completed.

As each configuration is finished successfully, an **OK** accompanying a green icon will be displayed on the right side of the respective setting.



Figure 20: AXIGEN Configuration Wizard in Progress

After completing the configurations, the wizard screen will also show the WebAdmin link and the **Exit** button will be highlighted. Left click on **Exit** to close the AXIGEN Configuration Wizard.



Figure 21: AXIGEN Configuration Wizard Completed

Chapter 5: Working with WebAdmin

You can now login to WebAdmin. Start your Web browser and enter the IP/port pair you've configured. According to the example in Chapter 4, the default address is <http://127.0.0.1:9000>. Login using the **admin** username and the password you've previously set.



Figure 22: Login to WebAdmin

5.1 Creating a New Domain

The AXIGEN mail server stores each created domain in a unique domain location. This location is specified when creating the domain and will result in an error if a second domain is created on the same location. The default location displayed by AXIGEN is </var/opt/axigen/domains>. To create a new Domain, please follow the steps presented below

1. Click on the **Manage Domains** tab. The following page is displayed.



Figure 23: Displaying domains in WebAdmin

2. To add a new domain, hit the **Add Domain** button displayed in the upper right corner of the Domain list.

Note: You can add a domain as a subdomain. The administrator selects a domain before creating the subdomain and the subdomain automatically inherits the name of the parent domain as a suffix. Therefore, if a domain on the server ends in a substring that is the name of another domain on the server, the latter is the parent domain and the former its subdomain.

3. Type the name of your domain in the **Domain name** text box. Please note the name of the domain cannot include special characters.

Note: AXIGEN is RFC compliant in terms of characters you can use when creating new domains and/or accounts. Please refer to the relevant RFC standard, Internet message format, available for instance on <http://www.faqs.org/rfcs/rfc2822.html>.

4. Specify a password to protect the selected domain in the **Postmaster password** field.
5. Check the **Enable MACL Support** option so users in belonging to this domain will be able to set different permission levels on their folders in order to share them.
6. Only on domain creation you have the option to configure storage location details by clicking the **Show** button. Detailed information on storage is available in the [corresponding Mail Server Architecture chapter](#).

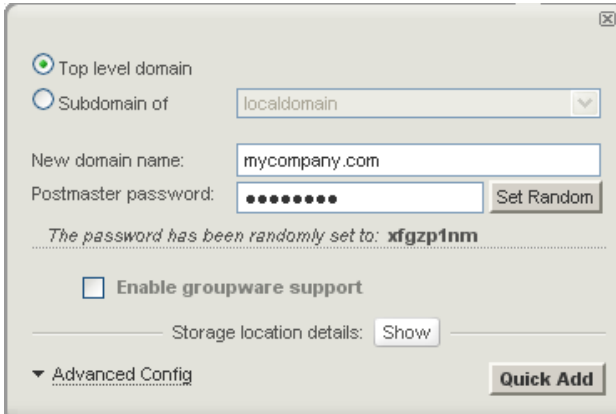



Figure 24: Adding a new domain using WebAdmin

7. Hit the **Quick Add** button to have the domain created with all the default parameters.
8. Hit the **Advanced Config** link to edit the domain-specific parameters according to your preferences. An in-depth presentation of AXIGEN domain-specific parameters is beyond the purpose of this document. For more relevant information, please refer to the product's [online documentation](#).



Service name	Actions
SMTP Receiving	ENABLE ▶ DISABLE ■
SMTP Sending	ENABLE ▶ DISABLE ■
POP3	ENABLE ▶ DISABLE ■
IMAP	ENABLE ▶ DISABLE ■
Remote POP	ENABLE ▶ DISABLE ■
Webmail	ENABLE ▶ DISABLE ■

Figure 25: Configuring domain specific parameters

9. Press the **Save Configuration** button (lower window section) to save your changes.

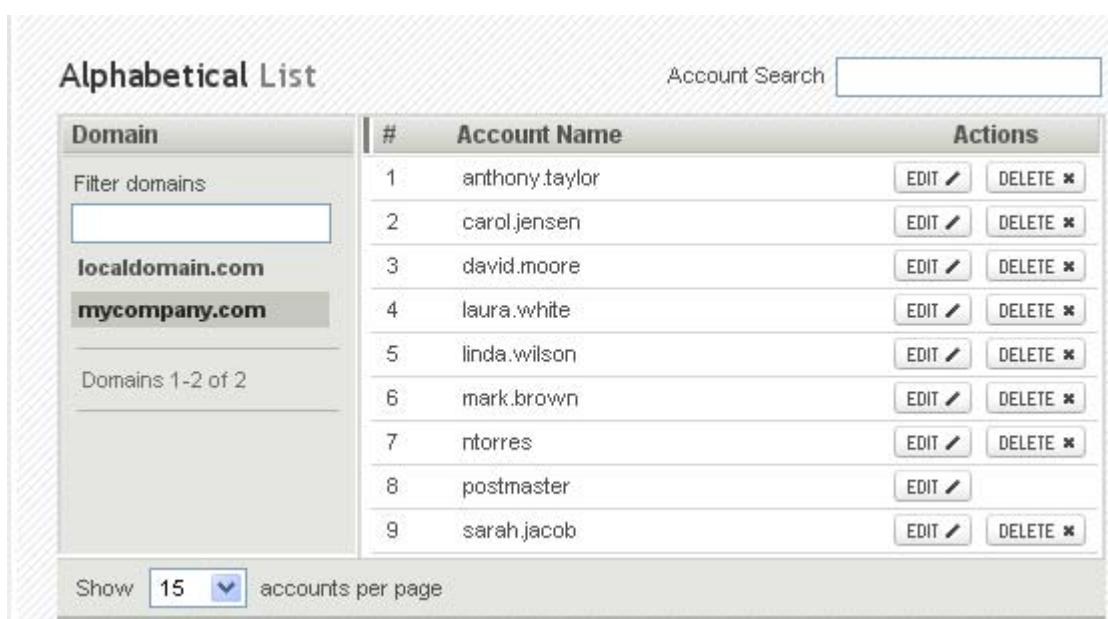
You have successfully created a new domain. You can see the domains you have created on the server at any time by clicking the **Manage Domains** tab.

Note: After defining your first domain, it will be set as primary domain. This will be considered your default domain for all incoming mail. You can make any domain primary at any time by pressing the corresponding **Make primary** button in the Domain list.

5.2 Adding an Account

To add a new account to an existing domain:

1. In the WebAdmin page click on **Manage Accounts** tab.
2. Click on the domain for which you want to display the existing accounts or to add a new account. In the example below, the accounts for the **mycompany.com** domain are displayed.



The screenshot shows the 'Alphabetical List' interface. On the left, there is a 'Domain' filter section with a search box and two domain options: 'localdomain.com' and 'mycompany.com', with 'mycompany.com' selected. Below this, it says 'Domains 1-2 of 2'. At the bottom left, there is a 'Show' dropdown set to '15' and the text 'accounts per page'. On the right, there is an 'Account Search' text box. The main area is a table with the following data:

Domain	#	Account Name	Actions
mycompany.com	1	anthony.taylor	EDIT ✎ DELETE ✕
	2	carol.jensen	EDIT ✎ DELETE ✕
	3	david.moore	EDIT ✎ DELETE ✕
	4	laura.white	EDIT ✎ DELETE ✕
	5	linda.wilson	EDIT ✎ DELETE ✕
	6	mark.brown	EDIT ✎ DELETE ✕
	7	ntorres	EDIT ✎ DELETE ✕
	8	postmaster	EDIT ✎
	9	sarah.jacob	EDIT ✎ DELETE ✕

Figure 26: Displaying accounts for a specific domain

3. The existing accounts for the domain you have selected are displayed. In order to create a new account, hit the **Add Account** button. The domain you are creating the account in is displayed in the **Domain name** field if you have already selected a certain domain. If you press the **Add Account** button prior to the domain selection, you will have to type the desired domain. Specify a name for the account you are creating in the **Account name** text field. Type a password of choice in the **Account password** text field or click the **Set Random** button to select a random password combination. When using this button, the password randomly assigned is displayed under it.

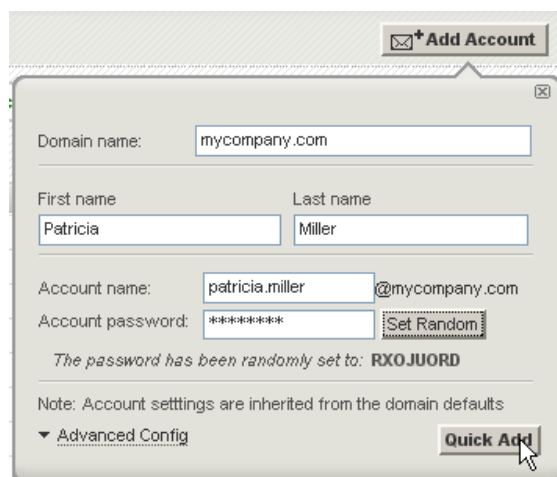


Figure 27: Adding a new account to an existing domain

- To add the account, press the **Quick Add** button. For advanced account settings, press the **Advanced Config** link and the pages below will be displayed. Edit the account-specific parameters to suit your needs or leave them with their default values. An in-depth presentation of AXIGEN account-specific parameters is beyond the purpose of this *Quick Installation and Configuration Guide*. For more relevant information, please refer to the product's [online documentation](#).

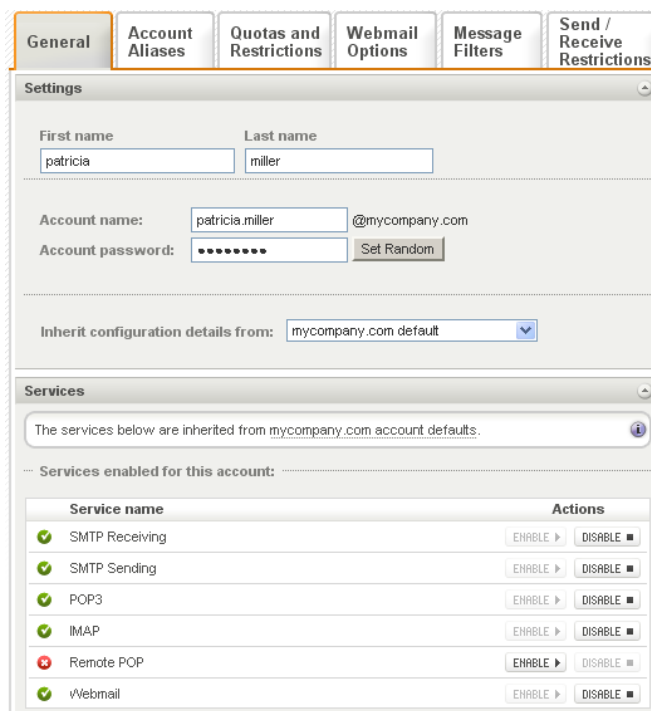


Figure 28: The Account Pages

- Press the **Save Configuration** button to save your changes.

You have successfully added the 'patricia.miller' account to the 'mycompany.com' domain. For further details on accounts advanced settings, see Accounts section.

5.3 Connecting ClamAV, SpamAssassin and Commtouch

To make sure your mail traffic is free of viruses or spam, connect the ClamAV Antivirus application and SpamAssassin and Commtouch Anti-spam applications.

AXIGEN implements a proprietary filter scripting language that allows you to implement connectors for any Antivirus and Antispam applications. By default, AXIGEN comes with connectors for ClamAV Antivirus and SpamAssassin and Commtouch Anti-spam applications.

Starting with version 5.0, the SpamAssassin application is bundled (meaning it is included in the AXIGEN installation kit). In order to start the Bundled SpamAssassin, you need to run the "axigenfilters" script. The start/stop/restart actions for the 'axigenfilters" script, follow the instructions in the corresponding [online documentation chapter](#).

For details on integrating ClamAV, please see the [dedicated article](#) on our site.

Commtouch offers real time antispam protection. AXIGEN now connects to Global Detection Centers which analyze large volumes of Internet traffic and identify and prevent new spam outbreaks.

5.4 Accessing AXIGEN WebMail

Now that your mail server is fully functional, you can access WebMail to send and receive test messages. WebMail can be accessed at the default address: <http://127.0.0.1:8000/>.

To log on to AXIGEN WebMail use one of the email accounts created using the procedure in [Adding an Account to an Existing Domain](#). Enter the full email address in the username field.



Figure 29: WebMail Login Page

5.5 Configuring Other Services

You can enable the WebMail module from the "**Services Management**" tab. Make sure you also configure the "**Listeners**" from the "**WebMail**" tab so that WebMail can be accessed via this IP/port address.

Important: There is one "**Listeners**" section on the service configuration page for each AXIGEN service. Make sure you configure correctly the listeners for each service you want to run. At a minimum, you should configure the Listeners for the "**SMTP-In**", "**POP3**", "**WebMail**" services, using corresponding IP/port addresses.

Now you have successfully installed AXIGEN Mail Server and created a new domain and a new account. This completes your quick installation and configuration training. Your AXIGEN Mail Server is currently functional.

5.6 Advanced Configuration Options for the AXIGEN Mail Server

After going through the installation and initial configuration steps, AXIGEN Mail Server is working based on its default server configuration file (axigen.cfg). You can subsequently use the following methods to obtain the most out of your AXIGEN Mail Server:

- Use AXIGEN WebAdmin interface to configure AXIGEN Mail Server – the easiest and most recommended method;
- Use AXIGEN command-line interface (CLI) to configure AXIGEN Mail Server;
- Manually edit the configuration file.

For more information about these advanced configuration options available in the AXIGEN Mail Server, please consult the product's the [Online documentation](#).

5.7 Working with AXIGEN's Personal Organizer

Having time management and mobility needs in mind, starting with version 4.0 a Personal Organizer module is available from both AXIGEN's WebMail interface and the email client



Outlook. The Personal Organizer is therefore available for Business, Enterprise and ISP Editions of AXIGEN and comprises tools such as calendar, tasks, journal, notes and collaborative support. The newly implemented AXIGEN Outlook Connector enhances the communication of Microsoft's email client with the AXIGEN server, thus making the Personal Organizer available for Outlook users.

Furthermore, the AXIGEN Outlook Connector, a fresh application which allows Microsoft Outlook users to take

Figure 30: AXIGEN Outlook Connector Setup Wizard

full advantage of all AXIGEN's features and capabilities, is also provided to our users. The AXIGEN Outlook Connector 6.x implements most Exchange-like features, including server-side Search Folders (such as Unread messages or Large Messages) which enables users to easily locate messages based on various filters. The new application also allows new folders creation on the server directly from Outlook.

For a detailed usage description for the Personal Organizer in AXIGEN's WebMail Interface, please see the [corresponding chapter](#) of the online documentation. For instructions on Calendar, Notes, Journal and Tasks usage in Outlook, please see the application's help.

For complete information on how to install the AXIGEN Outlook Connector and on how to further configure your Outlook email client, see the [corresponding section](#) of our online documentation.

5.8 Configuring Mail Clients for Use with AXIGEN

Apart from AXIGEN WebMail, you can use various IMAP and POP mail clients to retrieve your AXIGEN mail. Each email client requires a specific configuration procedure when setting up your IMAP/POP service. Here are the configuration steps for some of the most common email clients (compatible with AXIGEN Mail Server). To see instructions for other compatible mail clients, see the corresponding articles in the [AXIGEN Knowledgebase](#).

5.8.1 Setting up Your POP3 account for Outlook Express 6

The following steps are required when setting up your POP3 account for Outlook Express 6:

1. Open Outlook Express.
2. Click the 'Tools' menu, and select 'Accounts...'.
3. Click 'Add', and then click 'Mail...'.
4. Enter your name in the 'Display name:' field (e.g. 'John Doe'), and click 'Next'.
5. Enter your full email address in the 'Email address:' field (e.g. 'john.doe@example.com'), and click 'Next'.
6. Select POP3 as your incoming mail server, enter the AXIGEN POP server name in the 'Incoming mail (POP3, IMAP or HTTP) server:' field and enter the AXIGEN SMTP server name in the 'Outgoing mail (SMTP) server:' field.
7. Click 'Next'.
8. Enter your username in the 'Account name:' field (e.g. 'john.doe@example.com'). Enter your password in the 'Password:' field, and click 'Next'.
9. Click 'Finish'.

If the server requires POP3/SMTP over SSL, continue with the following:

10. Select your account and click 'Properties'.
11. Click the 'Advanced' tab.
12. Check the box next to 'This server requires a secure connection (SSL)' under 'Incoming mail (POP3)'. The port will change to 995.
13. Check the box next to 'This server requires a secure connection (SSL)' under 'Outgoing Mail (SMTP)'.
14. Enter '465' in the 'Outgoing mail (SMTP):' field.

If the outgoing (SMTP) server requires authentication (default in AXIGEN), continue with the following, else jump to step 16:

15. Click the 'Servers' tab, and check the box next to 'My server requires authentication'.
16. Click 'OK'.

5.8.2 Setting up Your POP3 account for Mozilla Thunderbird

The following steps are required when setting up your POP3 account for Mozilla Thunderbird:

1. Open Mozilla Thunderbird.
2. Click the 'Tools' menu, and select 'Account Settings...'
3. Click 'Add Account'.
4. Select 'Email account' and click 'Next'.
5. Enter your full name in the 'Your Name:' field (e.g. 'John Doe').
6. Enter your full email address (e.g. john.doe@example.com) in the 'Email Address:' field, and click 'Next'.
7. Select 'POP3' as the type of incoming server you are using.
8. Enter the AXIGEN POP3 server address in the 'Incoming Server:' field, and click 'Next'.
9. Enter your username including the domain name (e.g. 'john.doe@example.com') in the 'Incoming User Name:' field, and click 'Next'.
10. Enter a name for your email account in the 'Account Name:' field, and click 'Next'.
11. Verify your account information in the dialogue box, and click 'Finish'.

If the server requires POP3/SMTP over SSL, continue with the following:

12. Click the 'Server Settings' tab.
13. Select 'SSL' from the 'Use Secure Connection' option.
14. Click the 'Outgoing Server (SMTP)' tab, select your account SMTP server, press 'Edit' and select 'SSL' from the 'Use Secure Connection' option.

If the outgoing (SMTP) server requires authentication (default in AXIGEN), continue with the following, else jump to step 16:

15. Check the box next to 'Use name and password' and enter your username, including the domain name (e.g. 'john.doe@example.com').

Make sure you use the AXIGEN SMTP server for outgoing messages:

16. Click your account SMTP server, then click 'Set Default'.
17. Click 'OK'.

5.8.3 Setting Up Your IMAP account for Outlook Express 6

The following steps are required when setting up your IMAP account for Outlook Express 6:

1. Open Outlook Express.
2. Click the 'Tools' menu, and select 'Accounts...'.- 3. Click 'Add', and then click 'Mail...'.- 4. Enter your name in the 'Display name:' field (e.g. 'John Doe'), and click 'Next'.- 5. Enter your full email address in the 'Email address:' field (e.g. 'john.doe@example.com'), and click 'Next'.- 6. Select IMAP as your incoming mail server, enter the AXIGEN IMAP server name in the 'Incoming mail (POP3, IMAP or HTTP) server:' field and enter the AXIGEN SMTP server name in the 'Outgoing mail (SMTP) server:' field.- 7. Click 'Next'.- 8. Enter your username in the 'Account name:' field (e.g. 'john.doe@example.com'). Enter your password in the 'Password:' field, and click 'Next'.- 9. Click 'Finish'.

If the server requires IMAP/SMTP authentication over SSL, continue with the following:

10. Select your account and click 'Properties'.- 11. Click the 'Advanced' tab.- 12. Check the box next to 'This server requires a secure connection (SSL)' under 'Incoming mail (IMAP)'. The port will change to 993.- 13. Check the box next to 'This server requires a secure connection (SSL)' under 'Outgoing Mail (SMTP)'.- 14. Enter '465' in the 'Outgoing mail (SMTP):' field.

If the outgoing (SMTP) server requires authentication (default in AXIGEN), continue with the following, else jump to step 16:

15. Click the 'Servers' tab, and check the box next to 'My server requires authentication'.- 16. Click 'OK'.

5.8.4 Setting Up Your IMAP account for Mozilla Thunderbird

The following steps are required when setting up your IMAP account for Mozilla Thunderbird:

1. Open Mozilla Thunderbird.- 2. Click the 'Tools' menu, and select 'Account Settings...'.- 3. Click 'Add Account'.- 4. Select 'Email account' and click 'Next'.- 5. Enter your full name in the 'Your Name:' field (e.g. 'John Doe').- 6. Enter your full email address (e.g. john.doe@example.com) in the 'Email Address:' field, and click 'Next'.- 7. Select 'IMAP' as the type of incoming server you are using.

8. Enter the AXIGEN IMAP server address in the 'Incoming Server:' field, and click 'Next'.
9. Enter your username including the domain name (e.g. 'john.doe@example.com') in the 'Incoming User Name:' field, and click 'Next'.
10. Enter a name for your email account in the 'Account Name:' field, and click 'Next'.
11. Verify your account information in the dialogue box, and click 'Finish'.

If the server requires IMAP/SMTP over SSL, continue with the following:

12. Click the 'Server Settings' tab.
13. Check the box next to 'Use Secure Connection (SSL)'.
14. Click the 'Outgoing Server (SMTP)' tab and check 'SSL'.

If the outgoing (SMTP) server requires authentication, continue with the following, else jump to step 16:

15. Check the box next to 'Use name and password' and enter your username, including the domain name (e.g. 'john.doe@example.com').

Make sure you use the AXIGEN SMTP server for outgoing messages:

16. Click the 'Server Settings' tab again, click the 'Advanced' button, then click the 'SMTP' tab.
17. Select the AXIGEN SMTP server address from the drop-down box as your outgoing SMTP server.
18. Click 'OK'.
19. Click 'OK'.